



Resource  
Management

Bank Project, AK  
Intrusive-Related Gold (IRG)

# Summary

## DGRM

- DG Resource Management Ltd. (DGRM) is a Canadian based, private, project generator.
- Management at DGRM have a successful **track record of exploration discovery across multiple commodities:** Uranium, REE's and Rare Metals, Specialty Metals, Industrial Commodities, Gold.
- **DGRM holds 100% interest in the Bank, Alaska Project**

## Property

### Treasury Block

- **Eureka Prospect:** Quartz veins in outcrop returned **1.27 to 150 g/t gold**
- **Eagan & Eagan Prospect:** Shear zone, quartz material samples returned **10.2 g/t gold**
- **Alder Creek Prospect:** 160-foot-long adit through mineralized zone, returned **53.8 g/t gold**
- **Coffee East Prospect:** **0.947** and **1.34 g/t gold** in soils anomaly
- **Coffee Dome (West) Prospect:** Quartz veins sampled returned **1.95 to 33 g/t gold**

### Vault Block

- **Bear Ridge:** Multiple unknown trenches

## Opportunity

- The Bank Property is road accessible on a year-round basis and consists of two separate claim blocks covering 5,525 Ha.
- Located on BLM lands, where rapid permitting for drilling is possible.
- Close to infrastructure and current mining operations.
- Numerous historical prospects which have not been followed up with modern exploration techniques

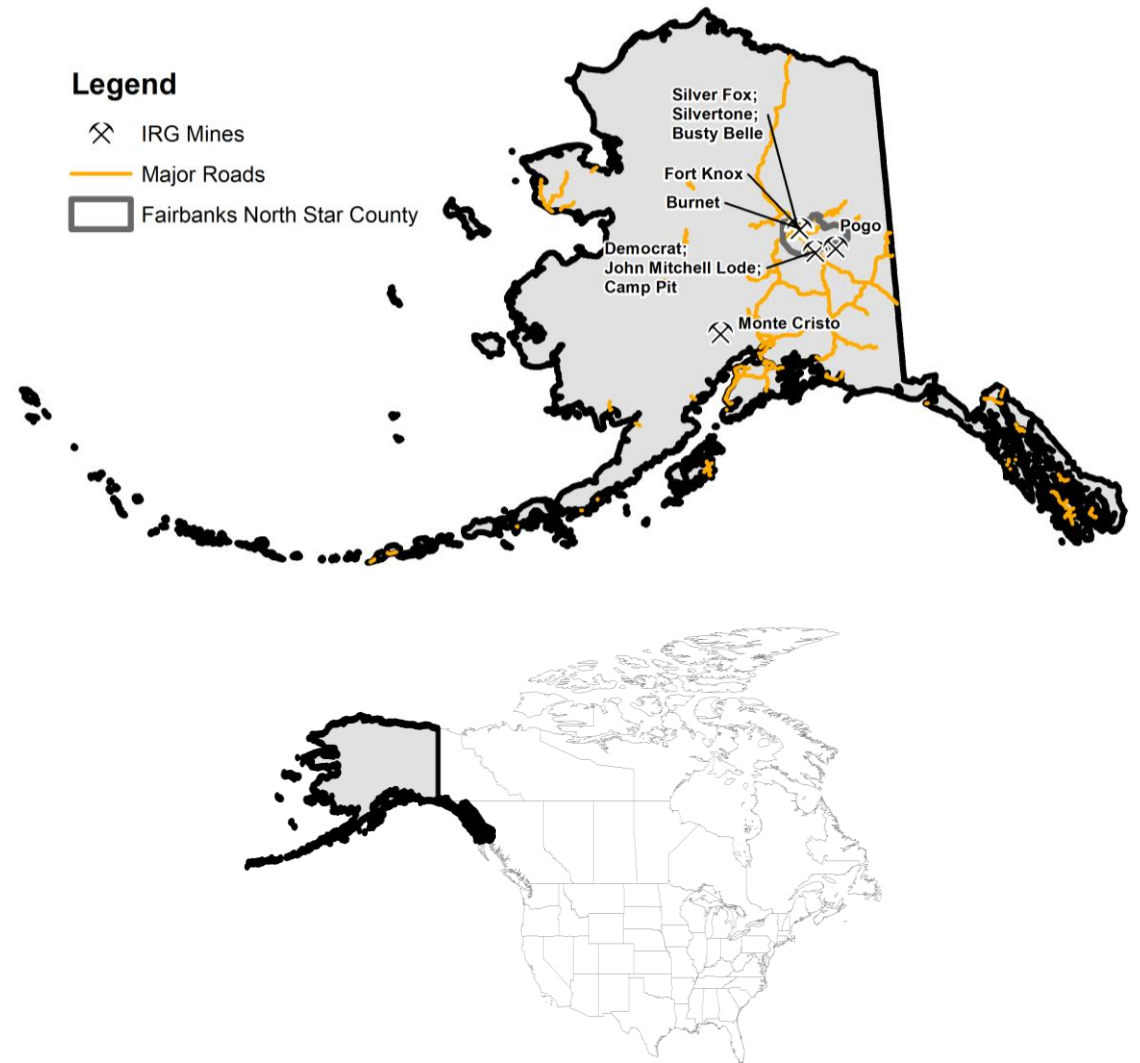


# Alaska USA

## The Bank Project is located within Fairbanks North Star County, Alaska

- Alaska is the **#4 ranked jurisdiction worldwide for Mining Investment Attractiveness**, and ranked as the **7<sup>th</sup> richest mineral province on Earth\***
- Alaska contains 40% of US gold resources, with over 47Moz of gold produced and is the top US state for mineral potential
- The Fairbanks area has a rich mining history with several current mines in the region and hosts the most significant economic mineralization for reduced intrusion-related gold (IRG) systems
- **The Fairbanks District produced ~8 millions ounces of placer gold since 1902**

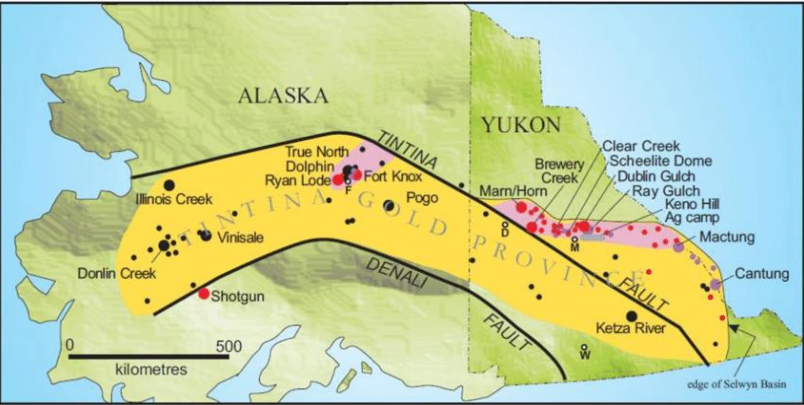
\* Fraser Institute (2019)



# Transactions

## Tintina Gold Belt

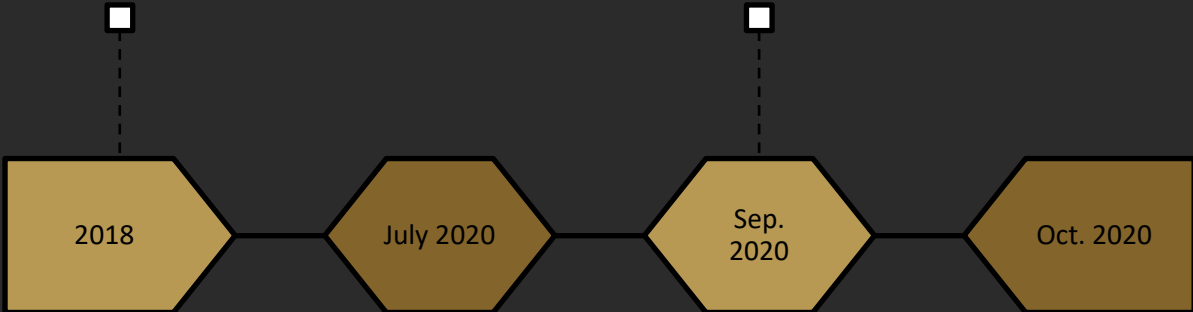
- The prolific Tintina Gold Belt is the premier gold mining district within Alaska
- Kinross Gold Corp’s Fort Knox Mine and Freegold Venture Ltd.’s Golden Summit Project are adjacent to the Bank Project



Northern Star buys Pogo Mine for \$260 million

Kinross expands Fort Knox Mill, advances Gilmore Project (1.5Moz)

Kinross acquires 70% of Peak Gold Project for \$93.7 million



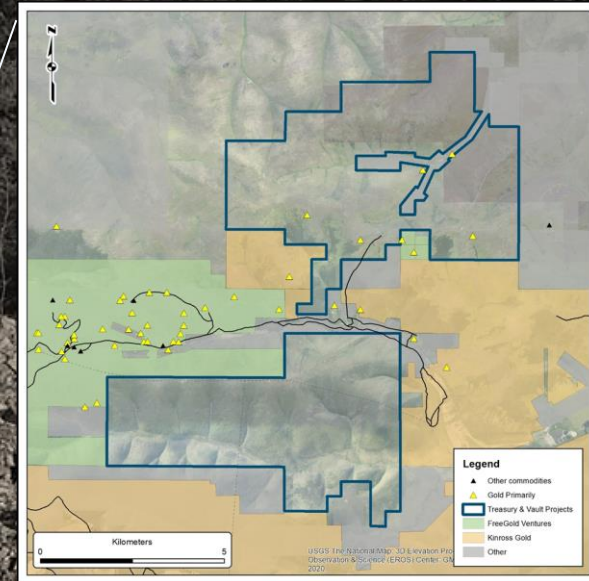
Freegold raises \$34.5 million for the Golden Summit Project  
Tectonic Metals raises \$4.9 million to advance the Tibbs Gold Project near Pogo.

Kinross announces long-term strategy of acquiring new projects to feed the expanded mill at Fort Knox  
International Tower Hill Mines closes \$10.3 million to advance the Livengood Project



# Bank Project, Alaska

- The Bank Property is situated 40 km NE of Fairbanks, AK.
- Acquired in 2020, the property is comprised of two contiguous claim blocks: Treasury (north) and Vault (south). The state mineral claims cover a total of approximately 5,525 ha.
- The property is entirely on State mineral lands, where permitting for exploration is expected to be straight forward.
- Access is by public roads on a year-round basis.



# Bank Project

## Freegold Ventures Golden Summit Project:

- 1.36 Moz Au Indicated
- 1.58 Moz Au Inferred

## Kinross True North Mine

- Operated from 2000 – 2004
- Recovered 490,000 oz Au

## Fort Knox Gold Mine

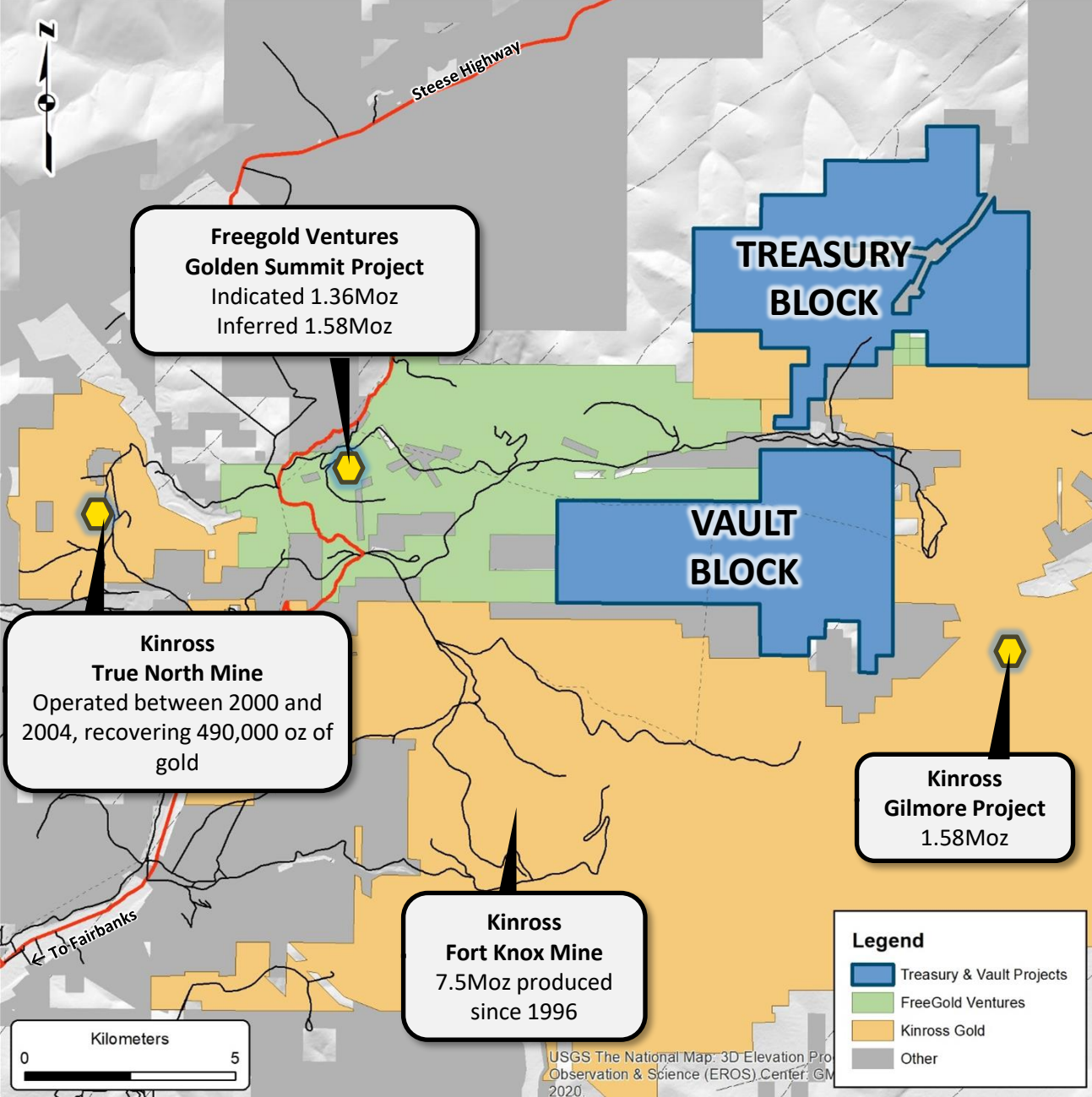
- 7.5 Moz Au production since 1996
- Current reserves of 2.8 Moz Au (2020)

## Kinross Gilmore Project

- 1.58 Moz Au

8 km





# Bank Project Setting

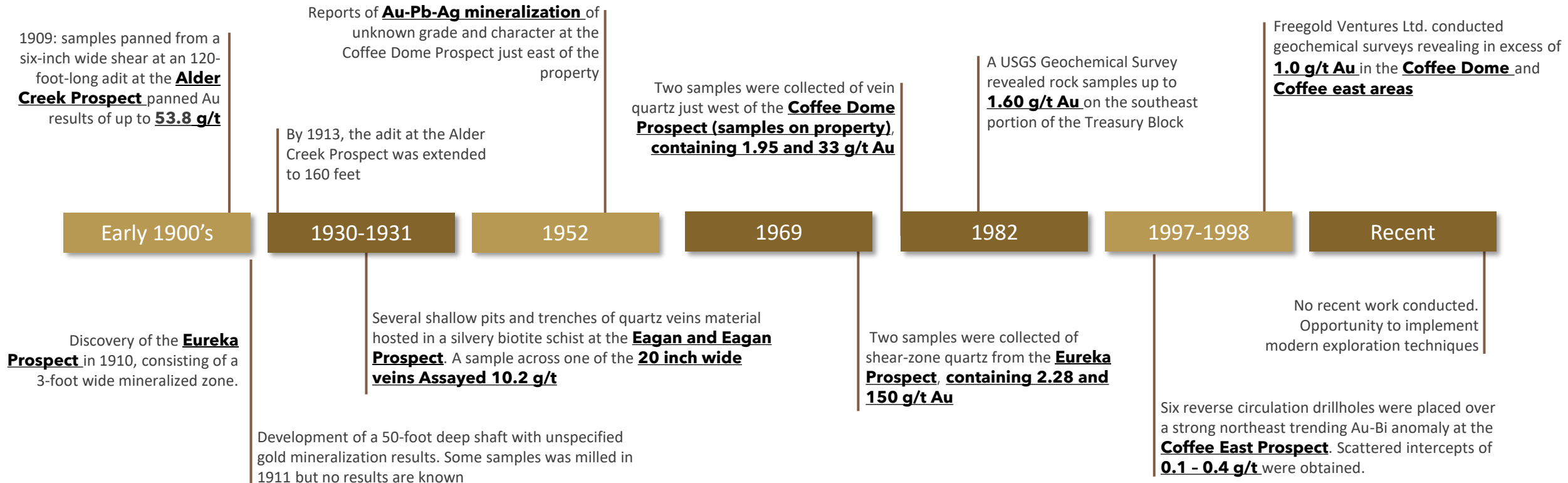
## Treasury Claim Block

- On trend of Freegold Ventures Golden Summit Project.
- Several historical prospects within this claim block, some of which have not been followed up with modern exploration concepts and techniques.

## Vault Claim Block

- The Vault claim block is approximately 5 km NE of the Fort Knox Mine. The mine has produced over **7.5 Moz of gold since 1996 and has reserves of 2.8 Moz gold (2020)**.
- It is surrounded by claims operated by Kinross Gold.
- Kinross is expanding the capacity at the Fort Knox Mine, and actively pursuing other gold assets to feed the mill.

# Property History





# Historical Highlights

Alder Creek Prospect

## Sampling of Historic Workings (Early 1900's)

- Grab Sample (from adit): **53.8 g/t**

Eagan and Eagan Prospect

- Channel
- (20 in vein) Sample: **10.2 g/t**

Eureka Prospect

## Sampling of Historic Workings (1969)

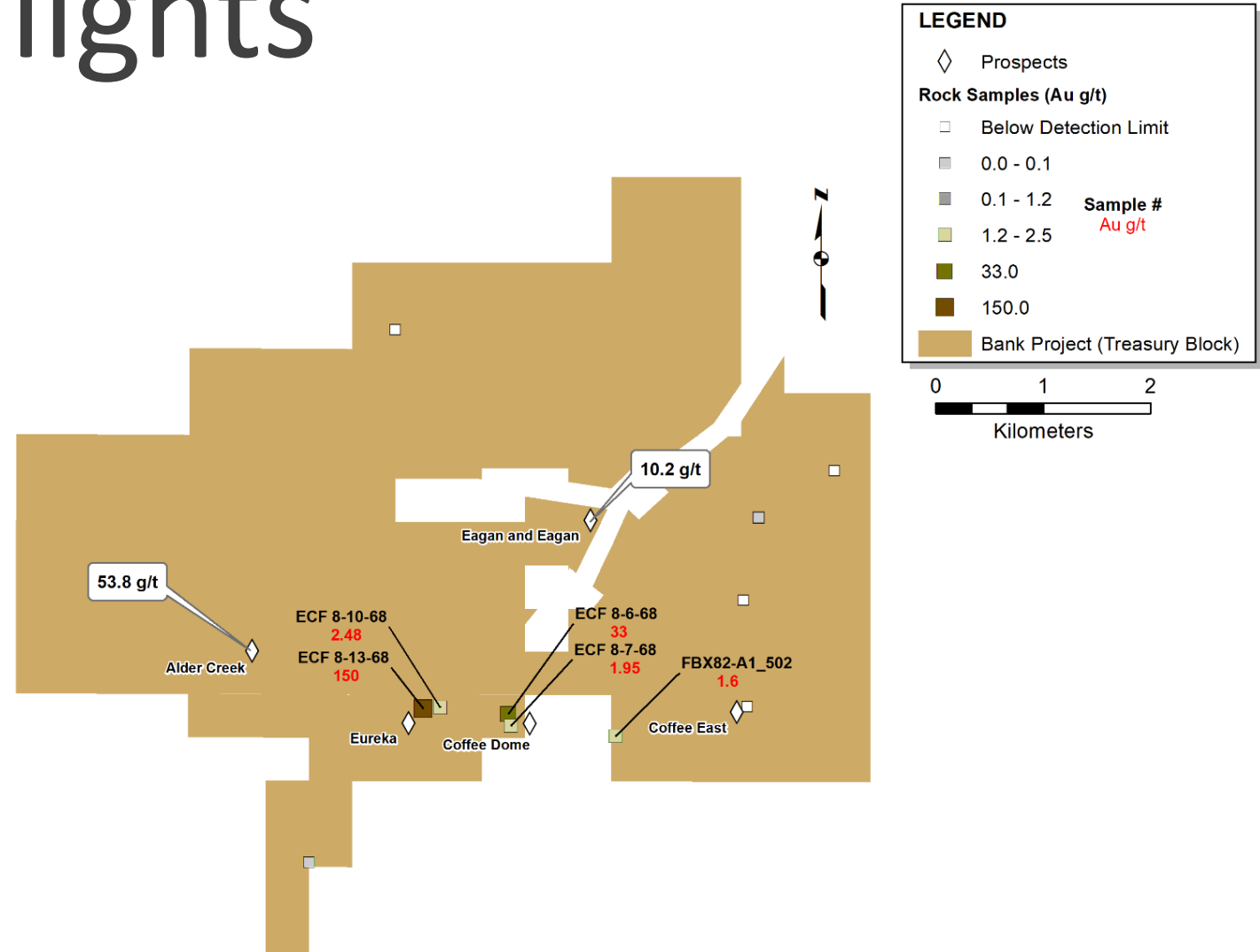
- Grab Sample: **150 g/t Au**
- Grab Sample: **2.48 g/t Au**

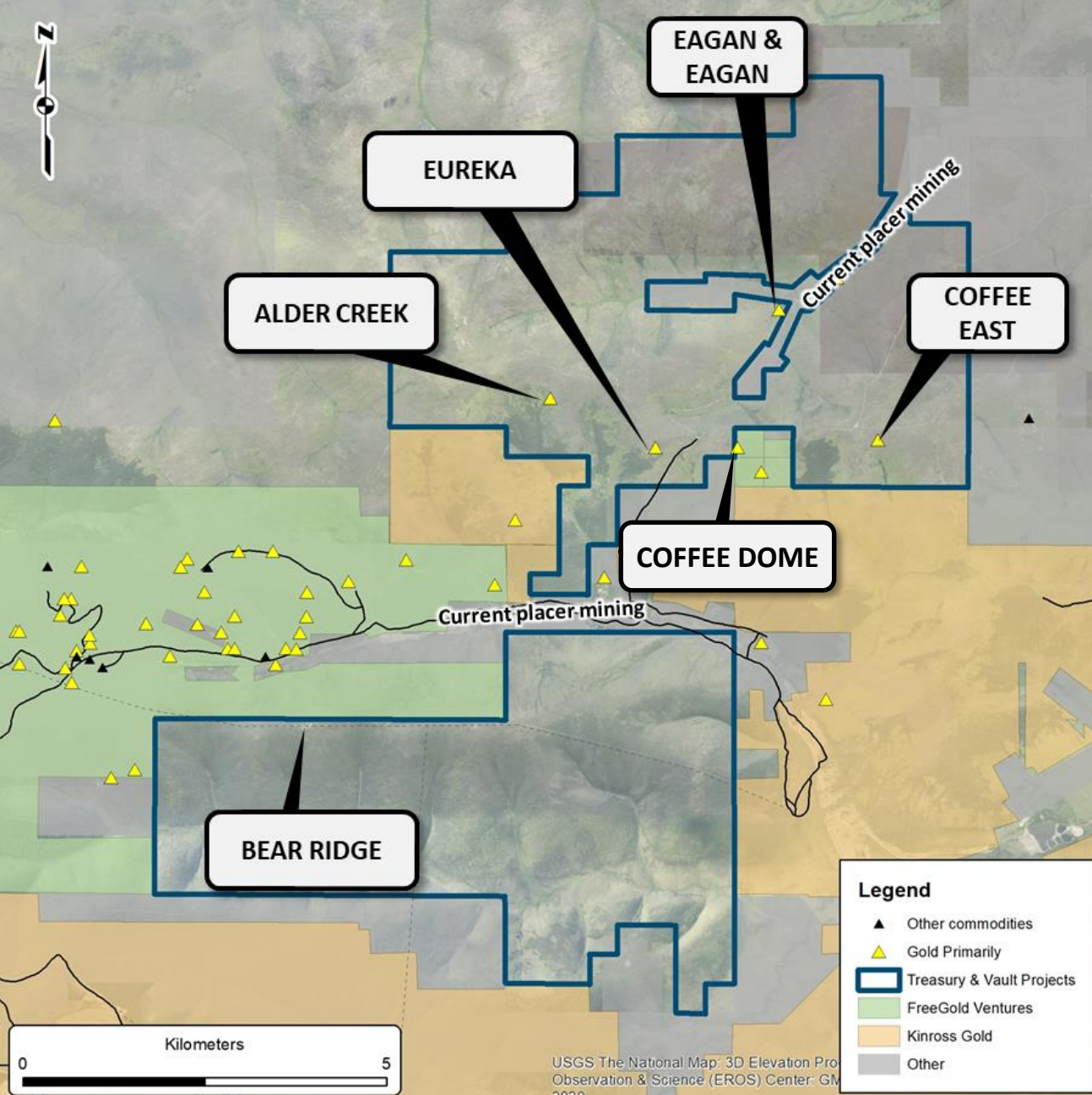
Coffee Dome (West) Prospect

- Grab Sample: **33 g/t Au**
- Grab Sample: **1.95 g/t Au**

## USGS Geochemical Database

- Grab Sample: **1.6 g/t Au**





# Prospects

## Eureka Prospect

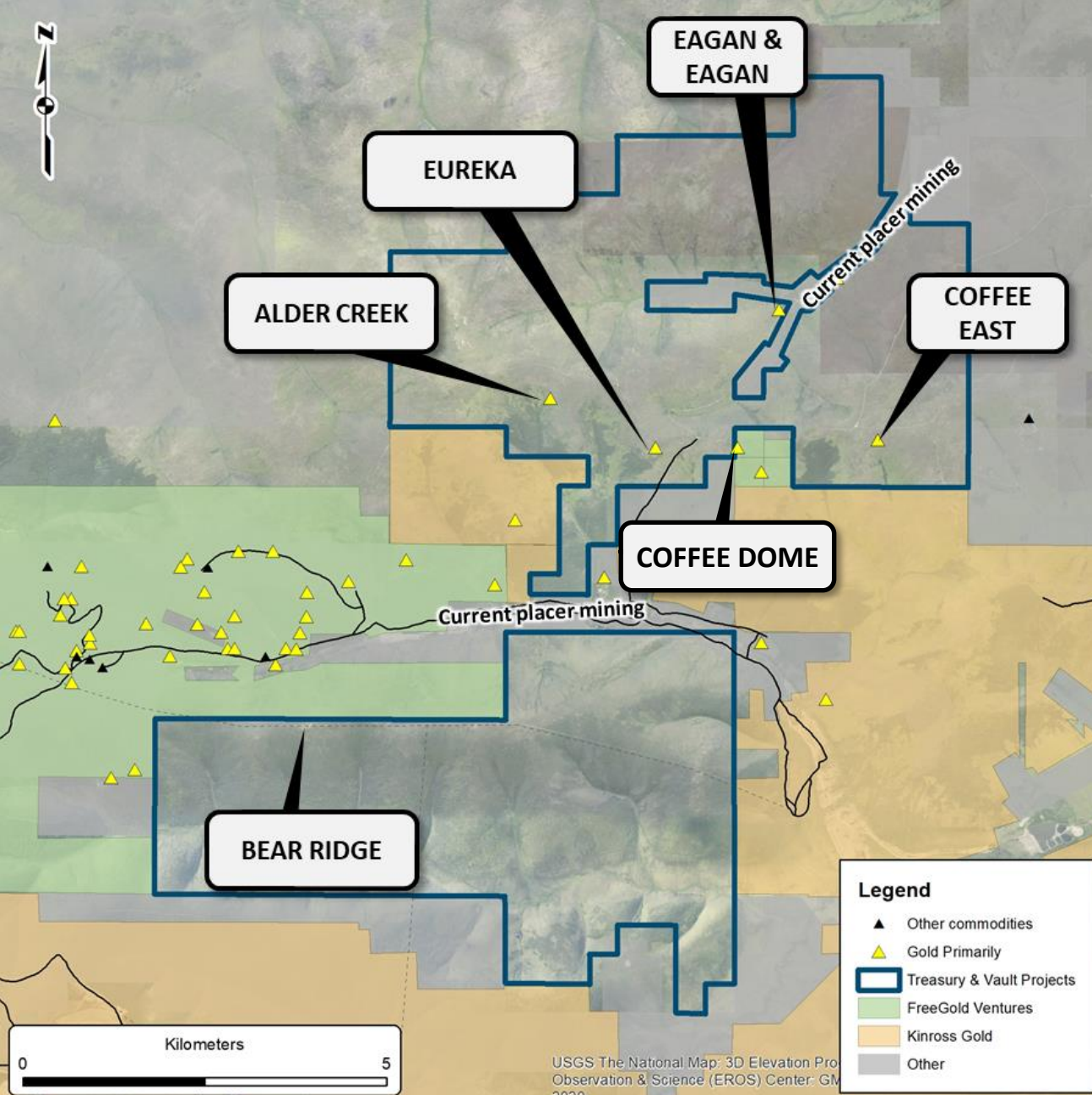
- Discovered in 1910
- Adit constructed in 1911
- 2 samples collected in 1969 (2.48 and 150 g/t gold)
- Auriferous quartz vein stockwork within diorite

## Eagan & Eagan Prospect

- 1933 reports of several quartz bearing shear zones
- Sample of 10.2 g/t Au reported
- In 1939 two shafts were sunk on the prospect
- Auriferous quartz bearing shear zones

## Coffee East Prospect

- Gold-bismuth soil sample anomaly
- 0.95 and 1.34 g/t Au reported in soils
- Auriferous quartz veining



# Prospects cont.

## Coffee Dome (West) Prospect

- Main prospect on ARDF listing is outside property
- Two samples collected ~200m west are within the Bank Project's property boundary
- The two 1969 samples reported 1.95 g/t and 33 g/t Au

## Alder Creek Prospect

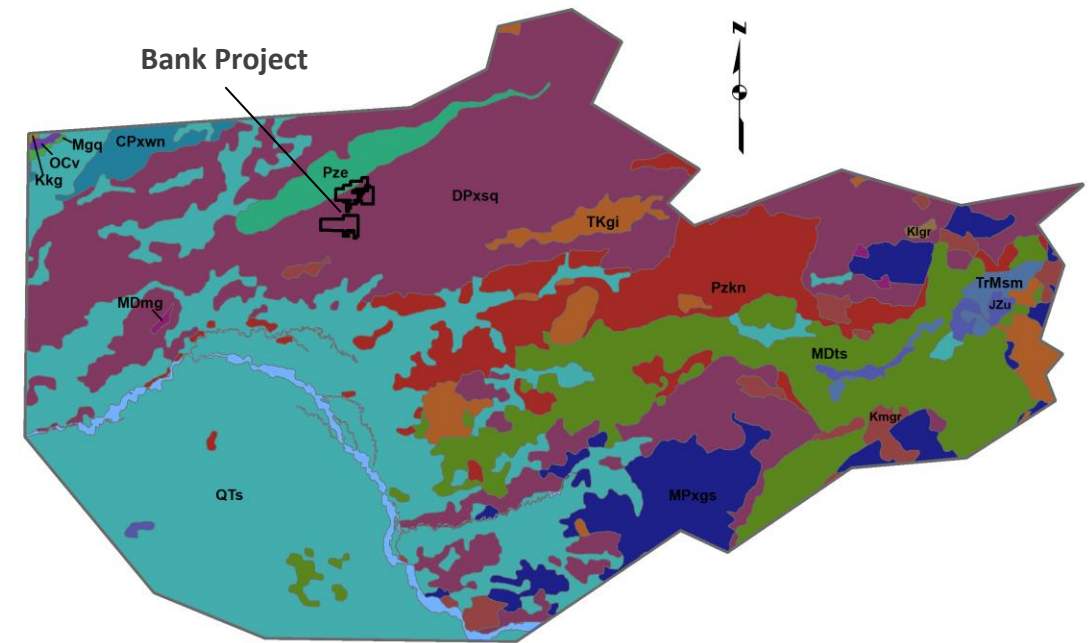
- Approx. 3-4m wide shear zone with adit (pre-1910)
- Auriferous quartz vein stockwork within propylitic altered basalt
- Samples collected from site panned 53.8 g/t in free gold

## Bear Ridge Prospect

- No known sample results
- Trench observed

# Geologic Setting

- The Fairbanks mining district is located in the northwestern part of the Yukon-Tanana terrane
- E-W to NW-directed faults and shears are present and are an important structural control on mineralization at most gold occurrences in the district.
- The Fairbanks Schist, is host to much of the mineralization in the Fairbanks mining district. Dominant lithologies present include, fine-grained micaceous-quartz schist and micaceous quartzite.
- The Property is underlain by dominantly by pelitic schists, quartzites and mafic interbeds

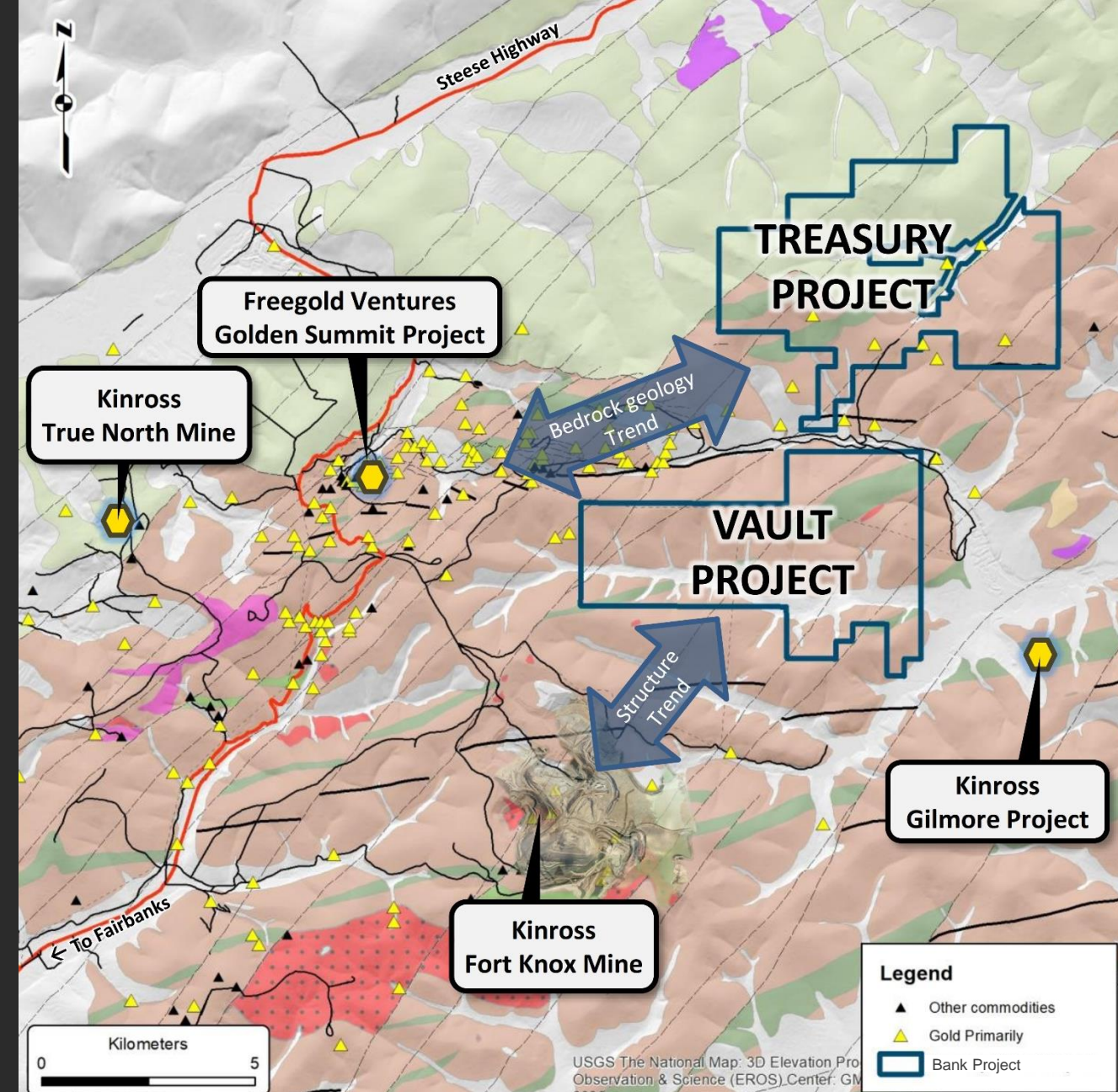


Fairbanks North Star County Geology

<b>Pze</b> Eclogite and associated rocks (Yukon-Tanana crystalline complex)	<b>Klgr</b> Intermediate granitic rocks
<b>Kkg</b> Flysch and quartzite, Kandik Group and equivalents	<b>Pzkn</b> Klondike Schist, Keevy Peak Formation, and similar rocks (Yukon-Tanana crystalline complex)
<b>OCv</b> Fossil Creek Volcanics and similar rocks	<b>JZu</b> Mafic and ultramafic rocks in central, western, and northern Alaska
<b>Mgq</b> Globe quartzite of Weber and others (1992)	<b>DPxsq</b> Pelitic schist and quartzite and mafic interbeds (Yukon-Tanana crystalline complex)
<b>MPxgs</b> Gneiss, schist, and amphibolite (Yukon-Tanana crystalline complex)	<b>TrMsm</b> Seventymile assemblage (Yukon-Tanana crystalline complex)
<b>MDmg</b> Granitic rocks and orthogneiss	<b>MDts</b> Totatlanika Schist (Yukon-Tanana crystalline complex)
<b>Kmgr</b> Granitic rocks of central and southeast Alaska	<b>QTs</b> Unconsolidated and poorly consolidated surficial deposits
<b>TKgi</b> Granitic rocks of southern and interior Alaska	<b>CPxwn</b> Wickersham and Neruokpuk units

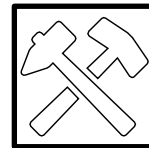
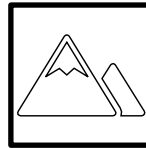
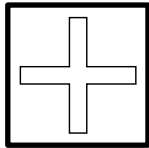
# Mineralization

- A plutonic origin has been ascribed to much of the gold mineralization in the Fairbanks district. Fort Knox is hosted entirely within granite, whereas the other gold occurrences are in favorable metamorphic units or structures, near plutonic rocks.
- Gold mineralization at the Bank Project is documented at or near 5 known prospects: Eureka, Eagan & Eagan, Coffee East, Alder Creek, and Coffee Dome
- Mineralization is generally characterized as **auriferous stockwork quarts veining or quartz shear zones** within a variety of lithologies
- Up to **150 g/t Au** at the Eureka Showing, **10.2 g/t Au** at the Eagan and Eagan Showing, and **53.8 g/t Au** at the Alder Showing



# Deposit Type

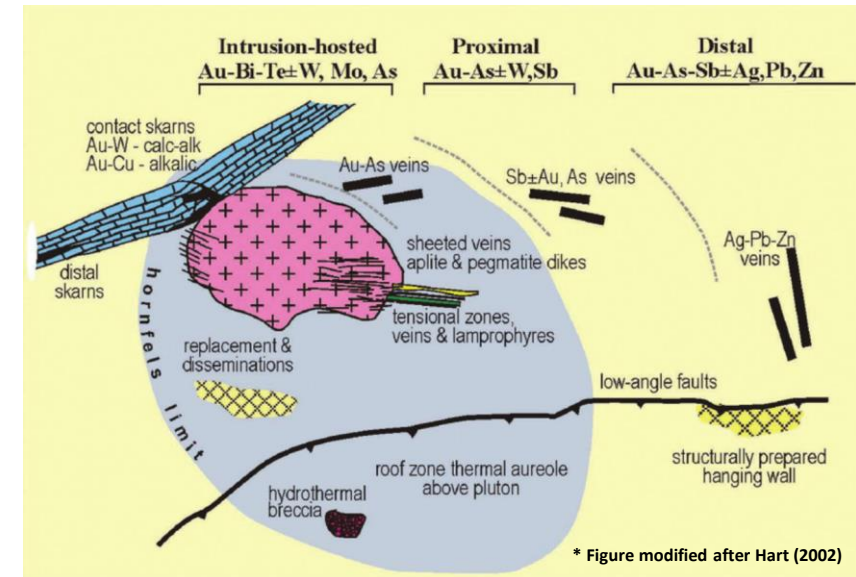
## Intrusive-Related Gold



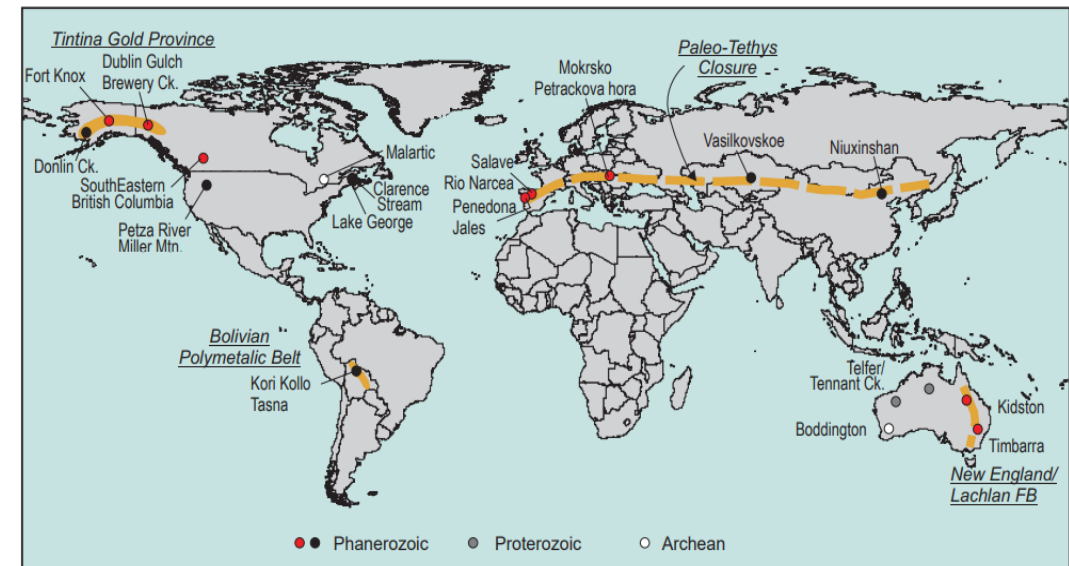
Intrusive-related gold deposits (IRG) are a **relatively new** and distinctive group of gold deposit types with chemistry that suggests a genetic link with plutonic rocks, in this case, mid-Cretaceous (90-105 Ma) intrusives.

Gold mineralization occurs in several different **geological settings** including discrete quartz veins and stockworks within shear zones, replacement zones and skarn within calcareous rocks, and as disseminations within intrusive rocks.

Geochemically **gold mineralization** is commonly associated with a distinct suite of one or more of the following elements: bismuth, tellurium, tungsten, arsenic, antimony, copper, mercury, silver, lead and zinc.

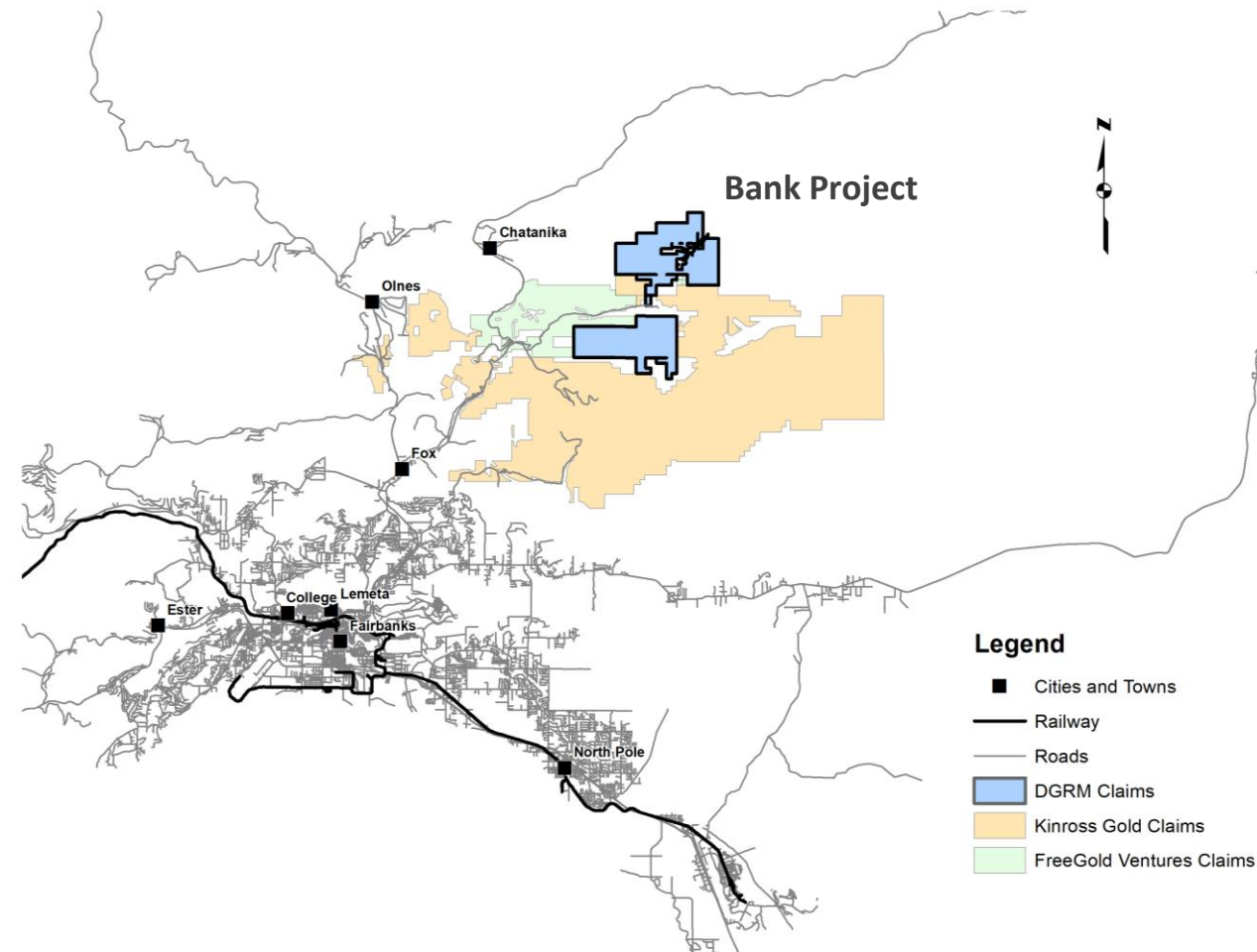


\* Figure modified after Hart (2002)



\*Modified from Thompson et al. (1999), Lang et al. (2000), and Lang and Baker (2001)

# Access



# Terrain



Typical Access trail

Typical gentle topography



# Conclusions

- **High Quality Mining Area** - The Bank Project is adjacent to Freegold's Golden Summit Project and on trend with the actively producing Fort Knox Mine; an open-pit mine with intrusion-hosted gold with reserves of 2.8 Million Ounces
- **Promising Mineralization** - The property is host to Intrusion-related gold mineralization with historic results of up to 150 g/t
- **Accessible** - Year-round road accessibility to The Property
- **Recently Underexplored** - Prospects require further investigation with modern exploration techniques





# DC Resource Management

Suite 103, 10183 – 112 Street  
Edmonton, AB T5K 1M1  
Tel: 780-434-9808

[www.dgrm.co](http://www.dgrm.co)

Jody Dahrouge  
Email: [jody@dahrouge.com](mailto:jody@dahrouge.com)

