

An aerial photograph of a valley in Idaho. The foreground and middle ground show rolling hills with patches of dense evergreen forest and areas of dry, yellowish-brown vegetation. A winding road or path is visible through the valley. In the background, more hills and mountains are visible under a cloudy sky.

# **DC** Resource Management

**Haynes Stellite, ID**

February 28, 2020

# Summary

## DGRM

- Canadian based, private, project generator.
- Successful management with a track record of exploration discoveries.
- Holds 100% interest in the Haynes Stellite Project, ID.

## Haynes Stellite

- Located next to Ram Deposit operated by eCobalt Solutions which contains 3.48 Mt ~ 0.55% Co, 0.75% Cu and 0.531 g/t Au.
- The HS Property covers the historic Co +/- (Cu,Au) Haynes Stellite Deposit containing an average of 1% Co.
- The Haynes Stellite Deposit is located within a mineralized zone up to 20 m wide and 1500 m long.

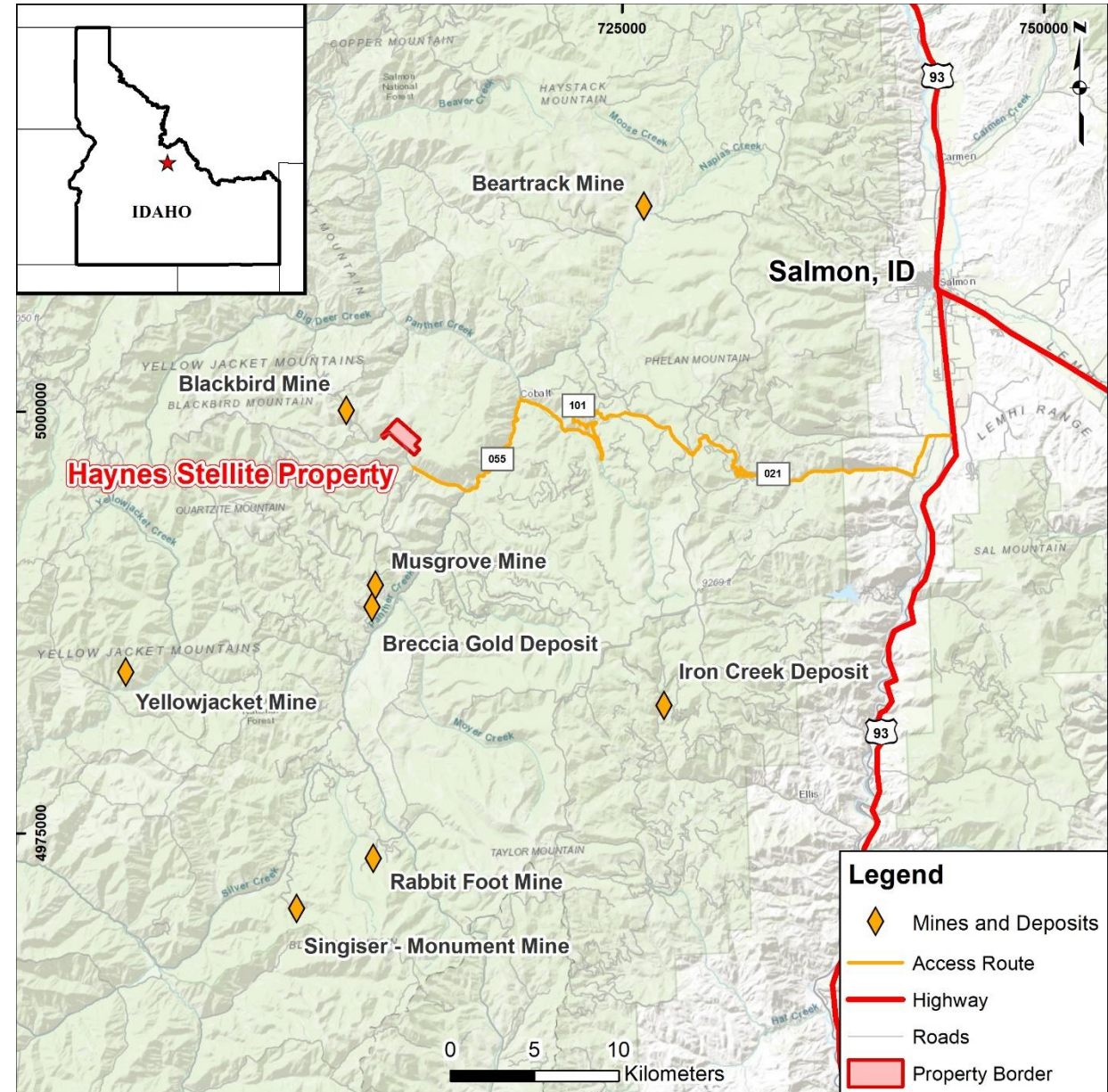
## Strategy

- Chip/channel sample across Haynes Stellite trend.
- Develop tonnages and grades for conceptual exploration model.
- Confirm/review rare earth potential of Haynes Stellite Deposit.



# Haynes Stellite - Location

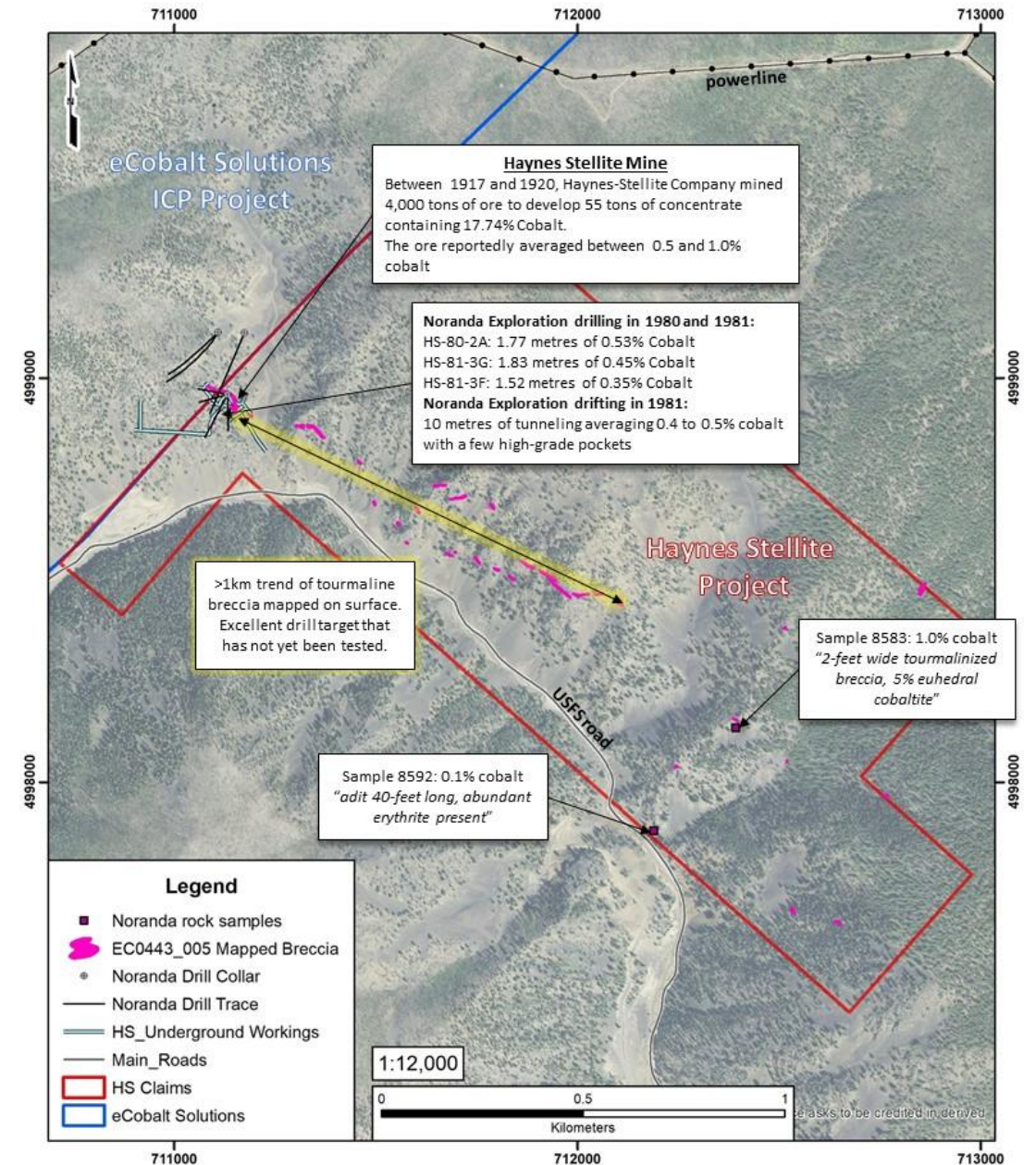
- The Haynes Stellite Project is an early stage Cobalt/ REE property that can be accessed by road approximately 70 km W of Salmon, ID.
- Acquired in 2017, the Haynes Stellite Property consist of 32 Lode claims that encompass 640 acres.
- The Haynes Stellite Property covers the historic Co +/- (Cu, Au) Haynes Stellite Mine and its southeastern extension.





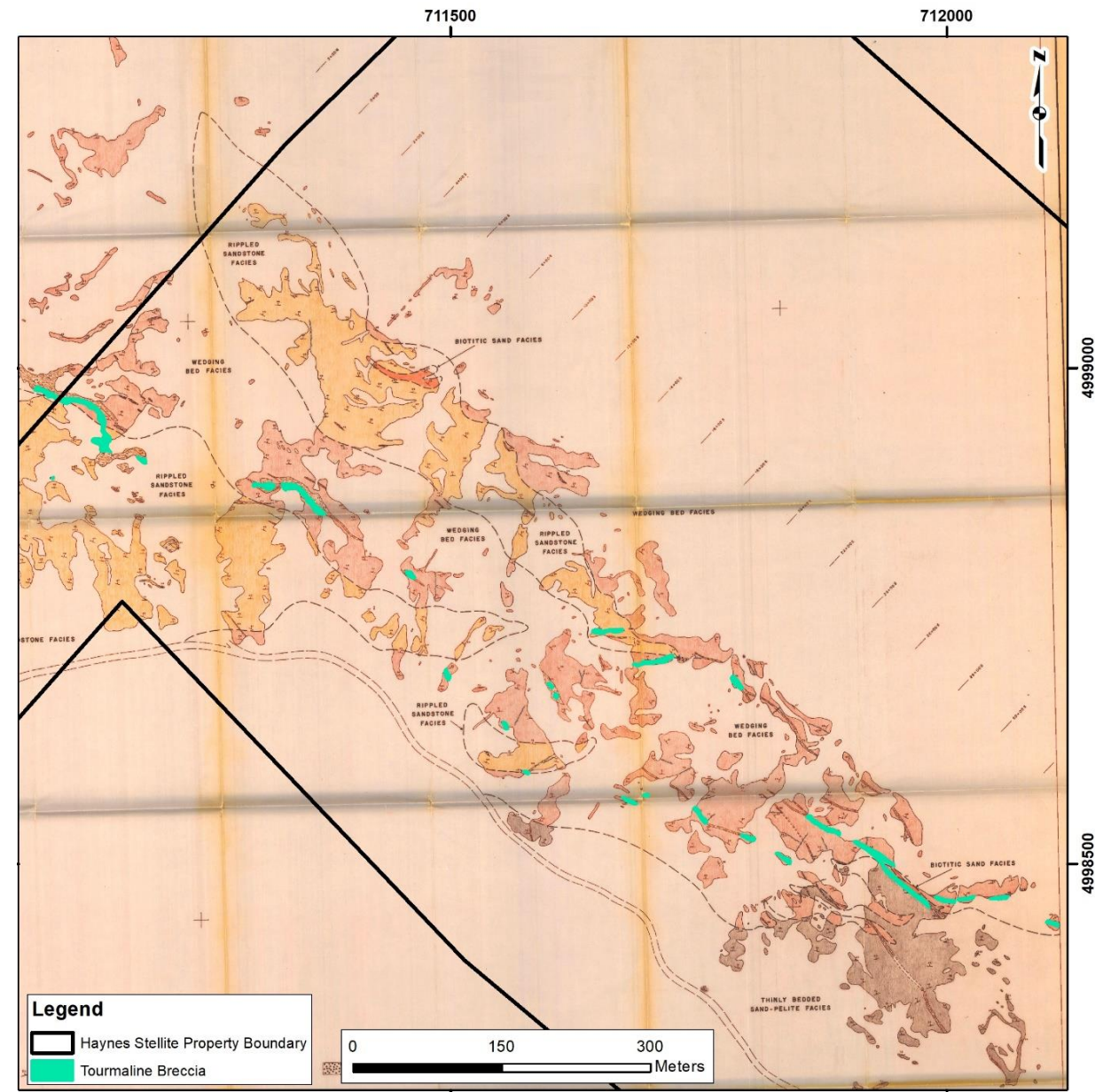
# Haynes Stellite - History

- The Haynes Stellite Mine operated between 1917 and 1921.
- In 1918, 4,000 short tons of ore was processed, from which 55 short tons of concentrate was produced, averaging 18% Cobalt Concentrate.
- Historic reports indicate the ore from historic workings averaged about **1% cobalt**.
- The Haynes Stellite Deposit is located within a mineralized zone up to 20 m wide and 1500 m long.
- Between 1980 and 1987 Noranda conducted exploration drilling intersecting **1.77 m of 0.53 % Co, 1.83 m of 0.45% Co and 1.52 m of 0.35% Co** along with a **10 m tunnel averaging 0.4 to 0.5% Co**.
- Slacks (2012) samples from Haynes Stellite produced encouraging REE results with one sample containing:
  - **13,800 ppm Y**
  - **2,580 ppm Dy**
  - **1,900 ppm Er**
  - **1,740 ppm Yb**



# Haynes Stellite – Geology and Mineralization

- The Haynes Stellite showing is underlain by thinly bedded, banded very fine-grained grey and black quartzite with interbedded dark green schist.
- Mineralized material is within a breccia zone (presumably a fault) in quartzite. Heavily silicified and replaced by tourmaline with an approximate 130° strike and near vertical dip.
- Very fine-grained cobaltite occurs disseminated along ill-defined zones as well as concentrated within pods and veinlets aligned parallel to schistosity.
- Historic mining was confined to a slightly coarser schistic rock containing cobaltite and tourmaline grains up to 0.01 inch in diameter.
- In places ore is impregnated with small, scattered siliceous veinlets containing small crystals of pyrite and chalcopyrite.



# DC Resource Management

Suite 103, 10183 – 112 Street  
Edmonton, AB T5K 1M1  
Tel: 780-434-9808

[www.dgrm.co](http://www.dgrm.co)

**Jody Dahrouge**  
Email: [jody@dahrouge.com](mailto:jody@dahrouge.com)



*Pink erythrite from the Cobalt area of Idaho.*